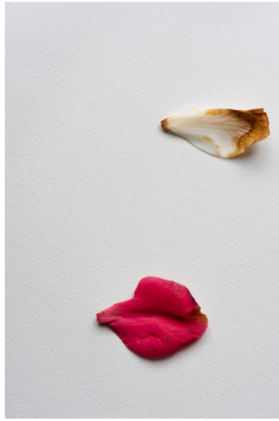


8



A S L E E P



A WINTER GARDEN

C A T A L O G U E

BENJAMIN DARLINGTON FINE ART PHOTOGRAPHY

[HTTP://BENJAMINDARLINGTON.COM](http://benjaminsdarlington.com) | [INFO@BENJAMINDARLINGTON.COM](mailto:info@benjaminsdarlington.com)

ABOUT

The **ASLEEP** Collection is a series of 4 images that explore the various feelings and senses that flow when being with someone you love - a partner, a parent, a child, a friend, a lover - as they sleep.

Although 4 is a small number of images for a collection, I believe it is the right number: this collection is complete.

With the exception of 'Breathing' (the bluebell leaf), all images are photographs of Camellia petals which were blown from two small trees in a winter garden by the high winds of March 2023. The bluebell leaf was knocked from the parent plant by a falling umbrella in the same winter garden (as ever, nothing living was picked).

Also as ever, there are no digital effects - the pins and wires which 'posed' the petals and leaf have been painted out but there is no other digital manipulation (when petals are shown together, there were photographed in that way - there is no 'assembly').

The images are only available via 1, very limited edition of giclee prints on fine art, bamboo paper. Please see last page for information on pricing, mounting and how to purchase.

FALLEN EDITIONS

SIZE	RUN	SPECIFICATION
A3 signed	20	White border with image title. Signed and numbered on front of print in lower border.



BREATHING

SERIES: ASLEEP - GARDENS IN WINTER. LIMITED EDITION OF 20. COLLECTED: MARCH 2023

BREATHING

Bluebell leaf. Fairies are said to sleep underneath bluebell leaves - there is a strong association with sleep and with the mystical.

There is a deep peace that comes from being totally in the present listening to a loved one breathe as they sleep. The leaf was shot against a smooth, plain background to emphasise the stillness.



RUMPLE GRUMPLE

SERIES: ASLEEP - GARDENS IN WINTER. LIMITED EDITION OF 20. COLLECTED: MARCH 2023

RUMPLE GRUMPLE

Camellia petals. In China, the Camellia is the symbol of love; for Coco Chanel, the flower (which has no fragrance) was a favourite and it appears across her jewellery, handbags and clothes. This is a flower with sass.

Sleep can be ugly messy - hair, arms, sheets everywhere. And waking can be a growl - a one eye open confusion. But still beautiful.



THOSE SOFT DAYS WHEN IT RAINED AND WE DRANK TEA AND SLEPT

SERIES: ASLEEP - GARDENS IN WINTER, LIMITED EDITION OF 20, COLLECTED: MARCH 2023

THOSE SOFT DAYS WHEN IT RAINED
AND WE DRANK TEA AND SLEPT

Camellia petals. There are days when nothing happens, when rain falls and it's quiet.

Those days are rare: when you are with someone you love, just sitting and being still - together - can be extra-ordinarily special.



AS YOU SLEPT, YOU FLEW. IT COMES TOO SOON - THIS LEAVING

SERIES: ASLEEP - GARDENS IN WINTER. LIMITED EDITION OF 20. COLLECTED: MARCH 2023

AS YOU SLEPT, YOU FLEW.
IT COMES TOO SOON, THIS LEAVING

Camellia petals. All relationships with loved ones end or change - whether through death, a romantic relationship running its course or simply a child growing up.

What remains is grief - love's final gift. Sometimes, you can feel that grief ahead of time.

VIEWING AND BUYING

The images are only available as very limited edition, giclee prints on fine art, bamboo paper. titled, signed and numbered.

Please see the 'About' page at the start of this catalogue for information on available editions.

Most people will view and buy at an Arts fair or market, such as Greenwich market. We are however also able to package and deliver prints to any UK address (card payment via phone).

Please email INFO@BENJAMINDARLINGTON.COM to check availability, to order a print or for a current list of markets and galleries where prints are available to view and buy.

PRICES

These images are most effective when hung as a set and the pricing is designed to enable purchase of the full set.

Each (when purchased separately)	£65
Set of 4	£180

All prints are 297 x 420mm (11.7 x 16.5 inches) Giclee (archival standard) prints on Hannemuhle Fine Art bamboo paper and supplied mounted in black, archival standard mounts. When purchased at an art market or fair, the mounts will be edged in 6mm pine, sprayed with gold leaf paint.

